

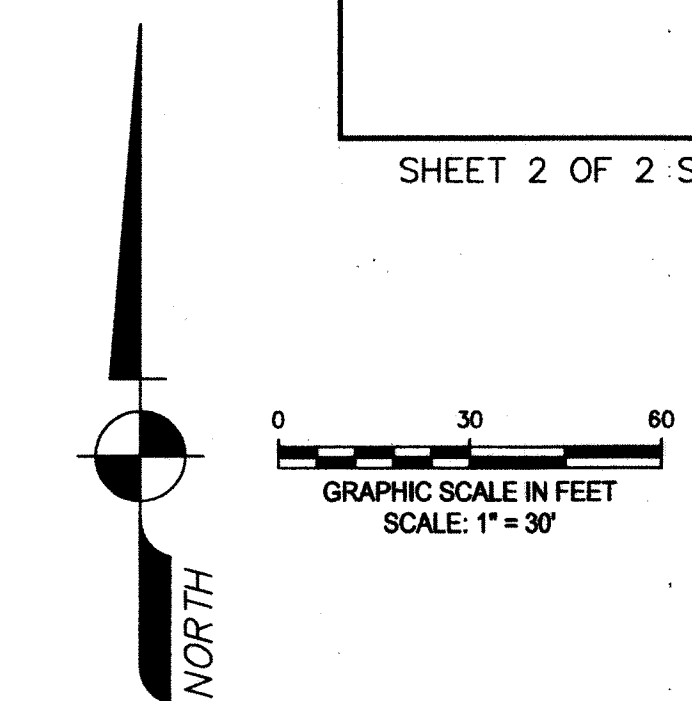
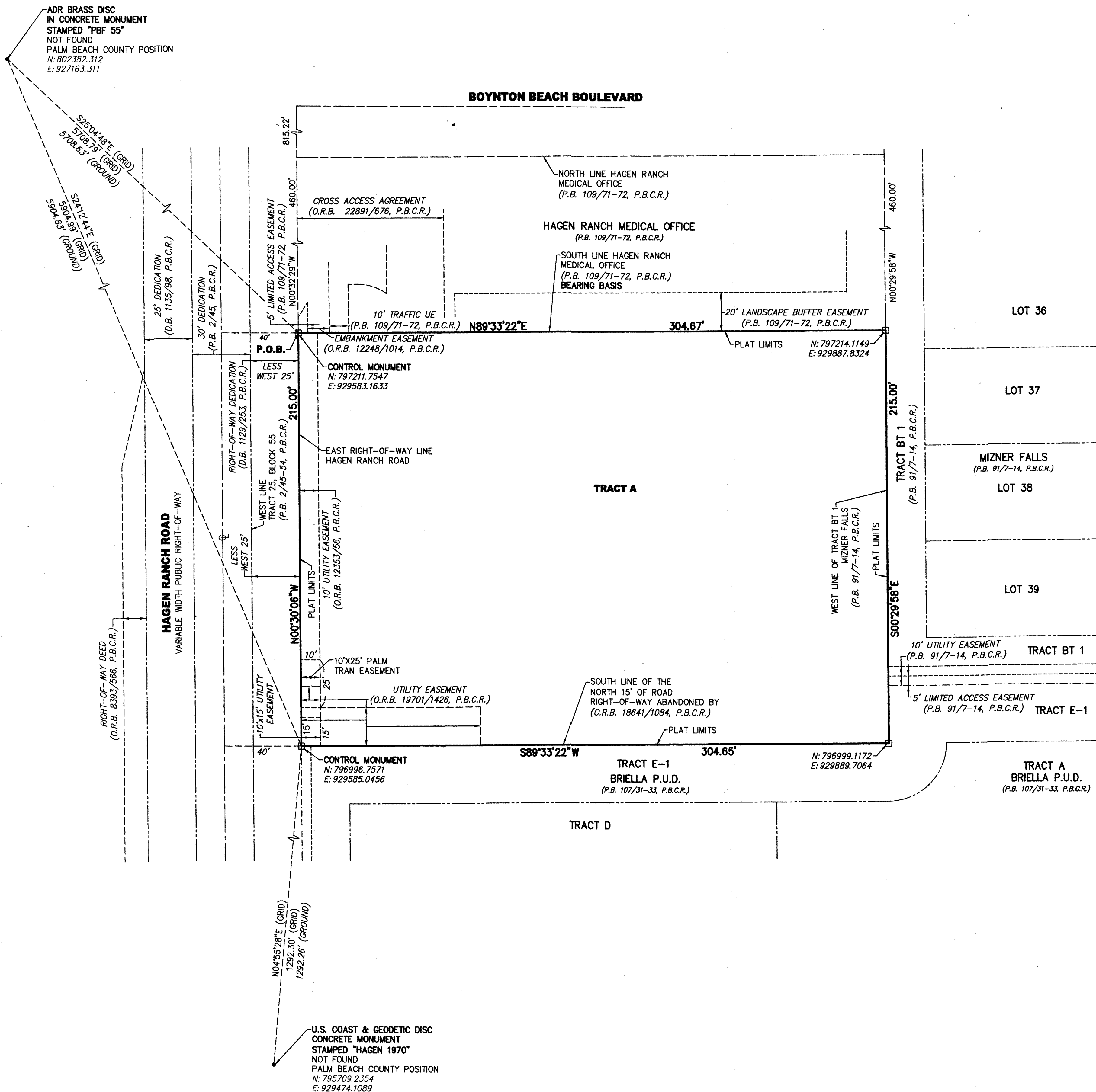
THIS INSTRUMENT WAS PREPARED BY:
 JOHN T. DOOGAN, P.L.S.
AVIROM & ASSOCIATES, INC.
 SURVEYING & MAPPING
 50 S.W. 2ND AVENUE, SUITE 102
 BOCA RATON, FLORIDA 33432
 (561) 392-2594
 L.B. #3300
 REVISE 04/22/2021

AMICUS MEDICAL CENTER MUPD

BEING A REPLAT OF A PORTION OF TRACT 25, BLOCK 55 AND A PORTION OF THE 30 FOOT ROAD
 RIGHT-OF-WAY, PALM BEACH FARMS CO. PLAT NO. 3, ACCORDING TO THE PLAT THEREOF AS RECORDED
 IN PLAT BOOK 2, PAGES 45 THROUGH 54 OF THE PUBLIC RECORDS OF PALM BEACH COUNTY, FLORIDA.
 SAID LANDS LYING IN SECTION 28, TOWNSHIP 45 SOUTH, RANGE 42 EAST, PALM BEACH COUNTY, FLORIDA.

95

SHEET 2 OF 2 SHEETS



NOTICE:
 THIS PLAT, AS RECORDED IN ITS GRAPHIC FORM, IS THE OFFICIAL DEPICTION OF THE SUBDIVIDED LANDS DESCRIBED HEREIN AND WILL IN NO CIRCUMSTANCES BE SUPPLANTED IN AUTHORITY BY ANY OTHER GRAPHIC OR DIGITAL FORM OF THE PLAT. THERE MAY BE ADDITIONAL RESTRICTIONS THAT ARE NOT RECORDED ON THIS PLAT THAT MAY BE FOUND IN THE PUBLIC RECORDS OF PALM BEACH COUNTY.

THE COORDINATE VALUES SHOWN HEREON ARE STATE PLANE COORDINATES (TRANSVERSE MERCATOR PROJECTION), FLORIDA EAST ZONE, NORTH AMERICAN DATUM (NAD) 1983, (1990 ADJUSTMENT AS READJUSTED BY PALM BEACH COUNTY IN 1998). CONTROL MEASUREMENTS MEET OR EXCEED THE LOCAL ACCURACY REQUIREMENTS FOR THE 2 CENTIMETER GEODETIC CONTROL SURVEY RELATIVE TO THE NEAREST AVAILABLE (NAD 83, 1990/1998) CONTROL WITHIN PALM BEACH COUNTY'S GEODETIC CONTROL NETWORK AND WERE VERIFIED THROUGH A REDUNDANCY OF MEASUREMENTS. ALL DISTANCES ARE GROUND DISTANCES IN U.S. SURVEY FEET UNLESS OTHERWISE NOTED.
 SCALE FACTOR = 1.0000273
 GRID DISTANCE = (GROUND DISTANCE) X (SCALE FACTOR)

- LEGEND:**
- - INDICATES SET PERMANENT REFERENCE MONUMENT, A 4"x4"x24" CONCRETE MONUMENT AND 3" BRASS DISC STAMPED "PRM L.B. 3300"
 - ⊙ - CENTERLINE
 - D.B. - DEED BOOK
 - F.S. - FLORIDA STATUTES
 - L.B. - LICENSED BUSINESS
 - MUPD - MULTIPLE USE PLANNED DEVELOPMENT
 - O.R.B. - OFFICIAL RECORDS BOOK
 - P.B. - PLAT BOOK
 - P.B.C.R. - PALM BEACH COUNTY RECORDS
 - P.L.S. - PROFESSIONAL LAND SURVEYOR
 - P.O.B. - POINT OF BEGINNING
 - P.R.M. - PERMANENT REFERENCE MONUMENT
 - UE - UTILITY EASEMENT
 - / - DENOTES PAGE

AVIROM & ASSOCIATES, INC.
SURVEYING & MAPPING
 50 S.W. 2ND AVENUE, SUITE 102
 BOCA RATON, FLORIDA 33432
 TEL. (561) 392-2594, FAX (561) 394-7125
 www.AVIROM-SURVEY.com

© 2021 AVIROM & ASSOCIATES, INC. All rights reserved.
 This sketch is the property of AVIROM & ASSOCIATES, INC. and should not be reproduced or copied without written permission.